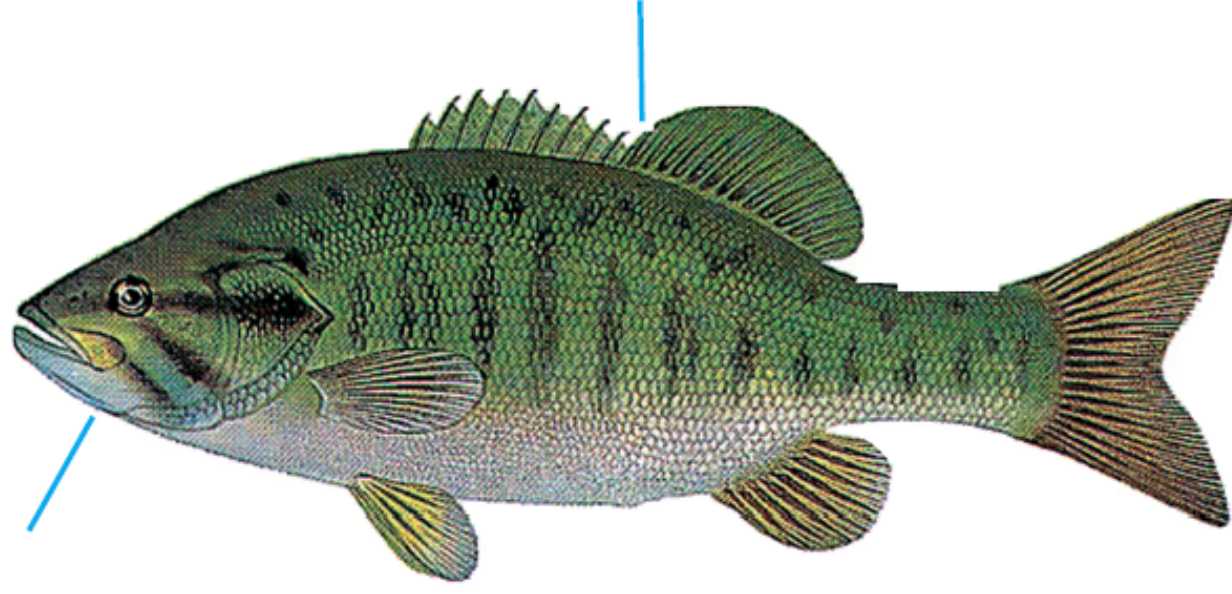




SOYERS LAKE FISH ID GUIDE

Smallmouth Bass

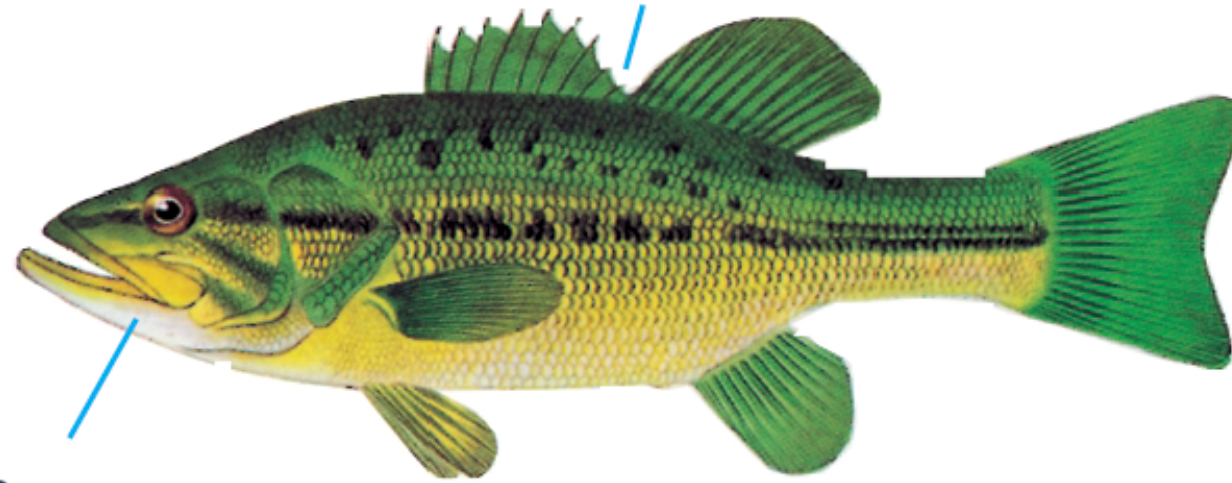
- L:** 25 - 50 cm (10 - 20 in.).
D: clear, rocky waters with little vegetation from southern Ontario to Timiskaming and northwestern Ontario.
S: largemouth bass.
K: upper jaw does not extend beyond eye; shallow notch between dorsal fins; body often with dark, broken bars.



Favorite Baits: jigs, spinners, crank baits, minnows, crayfish

Largemouth Bass

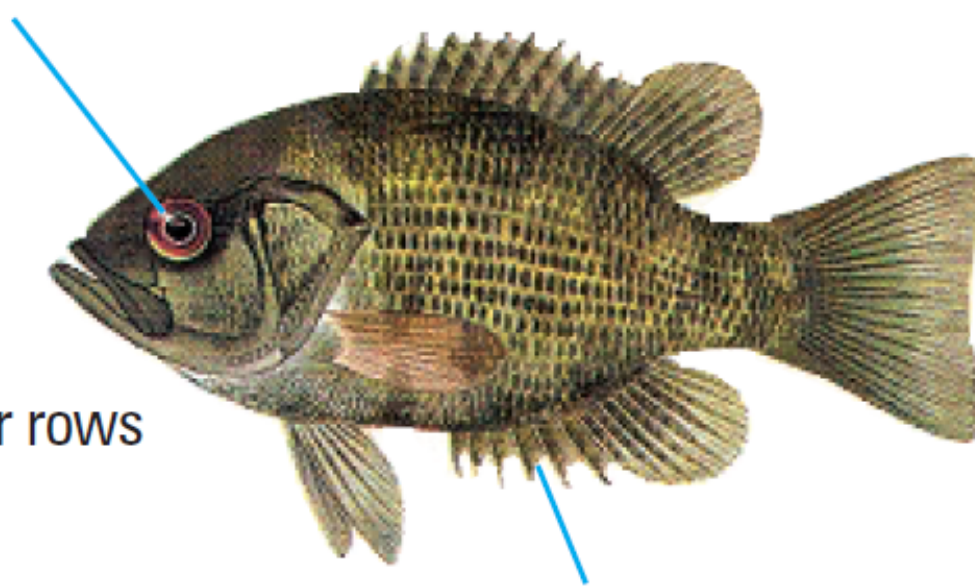
- L:** 25 - 55 cm (10 - 22 in.).
D: warm, weedy, slow or still waters primarily in southern Ontario.
S: smallmouth bass, rock bass.
K: upper jaw extends beyond eye; deep notch between dorsal fins; body often with a broken horizontal stripe.



Favorite Baits: spinnerbaits, crank baits, plastic worms, minnows, frogs

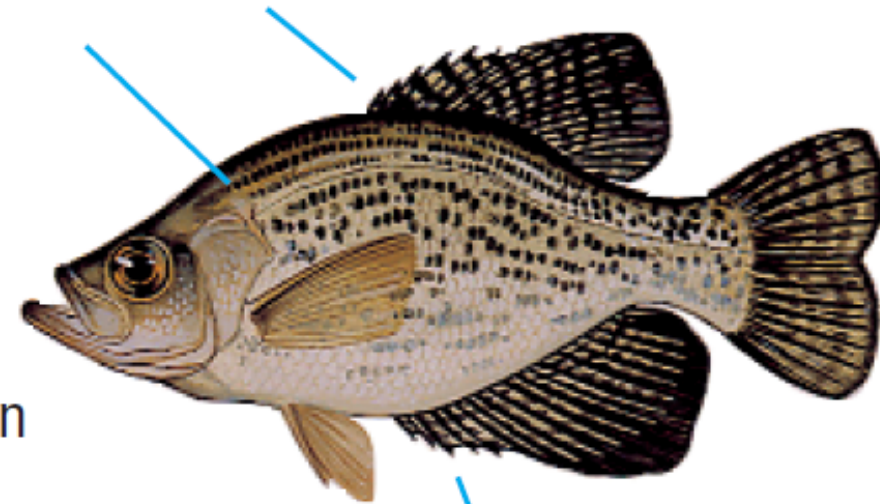
Rock Bass

- L:** 15 - 20 cm (6 - 8 in.).
D: warm, slow or still shallows with rocky bottoms, northward to Lake Abitibi.
S: pumpkinseed, bluegill.
K: large, red eye; six anal fin spines; regular rows of spots on the side in adults.



Black Crappie

- L:** 18 - 25 cm (7 - 10 in.).
D: clear, weedy lakes and slow rivers primarily Great Lakes, south central near northeast and parts of northwestern Ontario.
S: white crappie.
K: 7-8 dorsal fin spines; 6 or 7 anal fin spines; irregular mosaic of distinct black blotches.



Favorite Baits: small jigs, small minnows, worms

Yellow Perch

- L:** 15 - 30 cm (6 - 12 in.).
D: clear waters with some vegetation throughout Ontario; often school.
S: walleye, sauger, white perch.
K: 6 to 8 dark, vertical bands on sides, alternating with light yellow to yellow-green.



Favorite Baits: small jigs, small spoons, small minnows, worms

Walleye

- L:** 25 - 85 cm (10 - 33 in.).
D: lakes and rivers throughout most of Ontario.
S: sauger, yellow perch.
K: white tip on lower tail fin; no distinct blotches or bands on adults.



Favorite Baits: spinners, jigs, crank baits, worms, minnows, leeches

Muskellunge

- L:** 71 - 137 cm (28 - 54 in.).
D: discontinuous in southern and near northeastern Ontario, and the Lake of the Woods/ Rainy River area.
S: northern pike.
K: dark vertical bands on light background, at times spotted or clear; tips of tail fin more pointed than northern pike; see also head close-up above.



Favorite Baits: large bucktail spinners, large body baits, sucker minnows

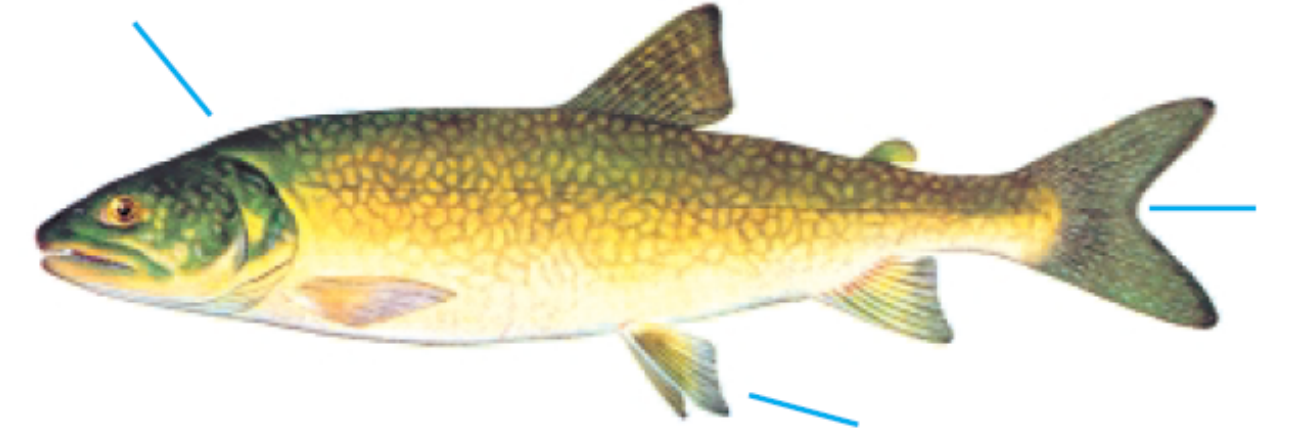
White Sucker

- L:** 30 - 50 cm (12 - 20 in.).
D: warm, shallow lakes and tributary rivers across Ontario.
S: other suckers (e.g. redbhorse).
K: torpedo-shaped; round in cross-section; scales smaller than redbhorse sucker.



Lake Trout

- L:** 30 - 80 cm (12 - 31 in.).
D: cold waters of deep lakes throughout much of Ontario.
S: brook trout.
K: light wormlike markings and spots on dark background, none red; deeply forked tail; white leading edge on lower fins, but no black line.



Favorite Baits: spoons, jigs, crank baits, lake trolls

Lake Whitefish

- L:** 30 - 65 cm (12 - 26 in.).
D: Great Lakes and deep, cold, inland lakes across Ontario.
S: cisco, round whitefish.
K: mouth overhung by snout (see below); body oval in cross-section.



Favorite Baits: small jigs, small spoons, small minnows

Profiles of whitefish and herring showing differences due to position of snout or upper jaw.

Lake Whitefish

- A.** The mouth is overhung by the snout or upper jaw; rounded profile.



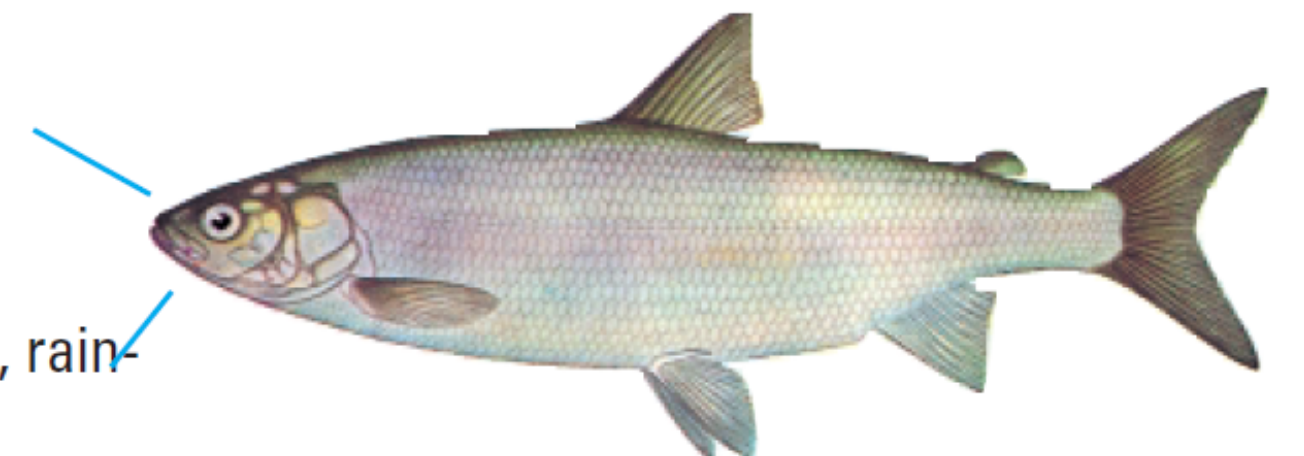
Cisco (Lake Herring)

- B.** The mouth is not overhung by the snout; pointed profile.



Cisco

- L:** 20 - 30 cm (8 - 12 in.).
D: cold waters from Great Lakes to Hudson Bay
S: lake and round whitefish, rainbow smelt
K: mouth not overhung by snout (see above); mouth ends before middle of eye.



Rainbow Smelt

- L:** 15 - 25 cm (6 - 10 in.).
D: throughout Great Lakes area, including some inland lakes.
S: cisco.
K: mouth extends beyond centre of the eye; tongue with prominent teeth.



Burbot (Ling)

- L:** to 38 cm (15 in.).
D: cool waters of lakes and rivers throughout Ontario.
S: bowfin.
K: single "whisker" on tip of chin; long, thin anal fin.



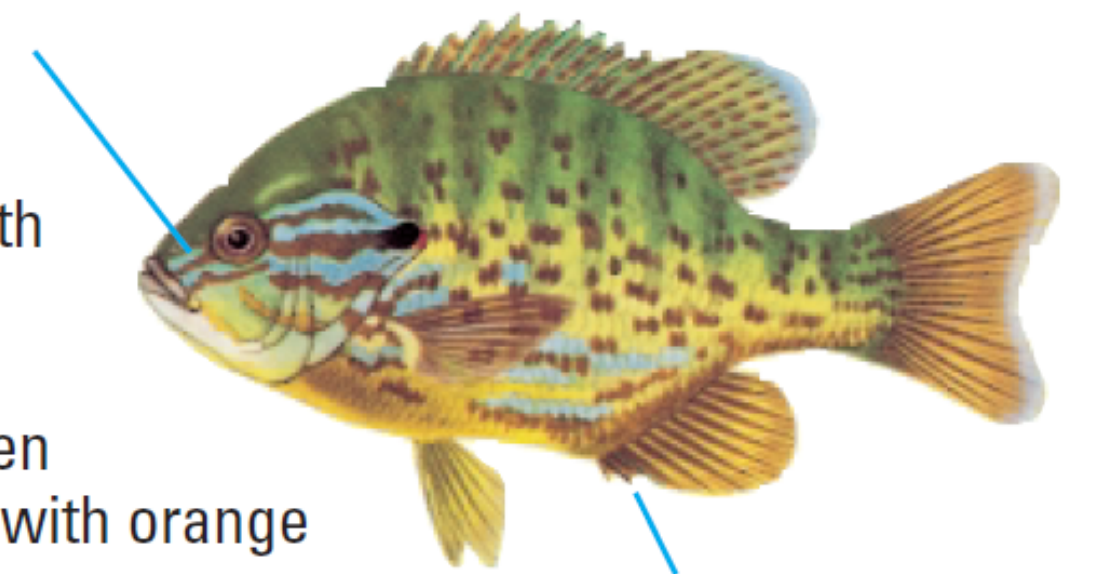
Brown Bullhead

- L:** 20 - 36 cm (8 - 14 in.).
D: warmer, slow waters throughout southern Ontario and generally south of highways 11 & 17 in the north.
S: channel catfish.
K: square tail.



Pumpkinseed

- L:** 18 - 23 cm (7 - 9 in.).
D: clear, shallow, weedy waters north to Temagami.
S: rock bass, bluegill.
K: 3 anal fin spines; wavy, blue-green stripes on sides of head; ear flap with orange or red spot.



Favorite Baits: small jigs, worms

L: Length.
D: Distribution/habitat.
S: Similar fish.
K: Key identifying characteristics that separate them from similar fish.
*Fish descriptions, illustrations & layout from Ontario NDMNRF Fish Identification publication.